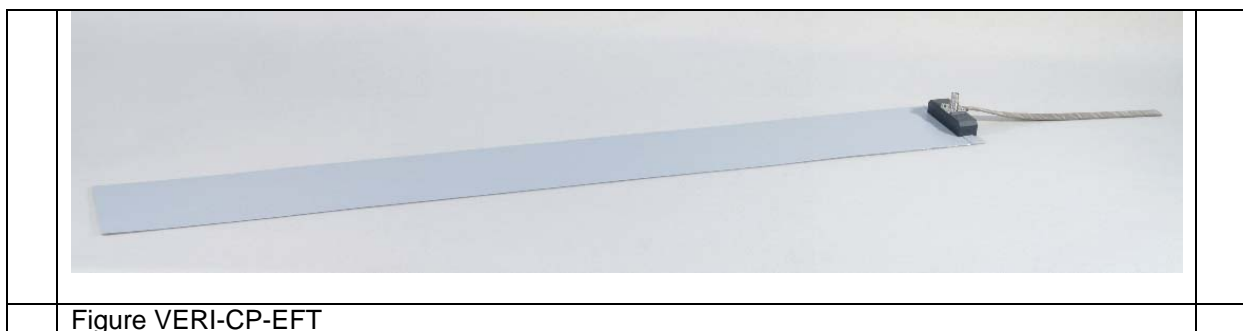


## VERI-CP-EFT is a transducer plate to calibrate the coupling clamp CN-EFT1000 in accordance with IEC 61000-4-4 Ed.3

Revised: 17.March 2011

### 1 GENERAL INFORMATION DEFINITION:

IEC 61000-4-4 Ed.3 defines a transducer plat for calibration of the capacitive coupling clamp. A transducer plate shall be inserted into the coupling clamp, and an adapter VERI50 EFT with a low inductance bond to ground shall be used for connection to the measurement equipment.



#### 1.1 Technical data

Insulation withstand capability	1.2/50 $\mu$ s	Min 2.5 kV
Insulation withstand capability	EFT 5/50ns	4 kV
<b>Dimensions of metallic part:</b>		
Width	120+/-1mm	
Length	1050 +/-5 mm	

### 2 CALIBRATION OF CAPACITIVE COUPLING CLAMP

- The calibration is performed with the generator output voltage set to 2 kV.
- The clamp shall be calibrated with a generator, which has been shown to be compliant with the generator calibration requirements the generator calibration requirements
- The generator is connected to the input of the coupling clamp The peak voltage and waveform parameters are recorded at the transducer plate output located at the opposite end of the clamp.
- The waveform characteristics shall meet the following requirements:
  - Rise time ( $5 \pm 1,5$ ) ns
  - Pulse width ( $50 \pm 15$ ) ns
  - Peak voltage ( $1\ 000 \pm 200$ ) V

## 2.1 Standard accessory, dimensions

### 2.1.1 Included articles, dimensions

VERI-CP-EFT (Article No. 104668)

---

#### Mechanical Dimensions

Unit Height:

Length: 105 cm

Width: 12 cm

Height: 4 cm

Net Weight: 1.5 kg

---

#### Included Articles

According to STL-Variante 20, STL-Version 1

Qty	PN	Description
1	104801	Brochure TRANSIENT 3000
1	104802	Standard calibration report
1	103194	CD-UM-IN-ALL includes all User Manuals and Instruction sheets of all EMC PARTNER AG sales products.

---

### 2.1.2 Standard accessories

No standard accessories necessary.

### 2.1.3 Ordering information

Pos.	PN	Type	Short Description
	104668	VERI-CP-EFT	Transducer plate for capacitive coupling clamp calibration. Connector HV BNC with 15cm flat band to bond to the reference ground plane. Requires VERI50 EFT

---

## **3 RECYCLING / DISPOSAL**

### **3.1 RoHS directive 2002/95/EG**

The VERI-CP-EFT complies with the directive 2002/95/EG (RoHS - Restriction of certain Hazardous Substances).

From December 2005, all EMC Partner products either hand soldered or by machine are produced using lead-free solder.

### **3.2 WEEE directive 2002/96/EG**

The EMC Partner VERI-CP-EFT is exempted from the directive 2002/96/EG (WEEE) under category 9.

The product should be recycled through a professional organisation with appropriate experience for the disposal and recycling of electronic products. EMC Partner are also available to help with questions relating to the recycling of this product.

### **3.3 Information for dismantling**



Remove always power cord fist.

There is no special danger involved in dismantling the VERI-CP-EFT.

### **3.4 Parts which can be recycled**

The VERI-CP-EFT contains parts made from steel, aluminium, PVC, two-component sealing compound. The impulse capacitors are filled with non-poisonous mineral oil. The various parts can be separated and recycled.

### **3.5 Parts which can not be recycled**

All parts in the VERI-CP-EFT can be recycled.

## 4 SERVICE INFORMATION

EMC PARTNER AG  
Baselstrasse 160  
CH - 4242 Laufen  
Switzerland



++41 61 775 20 50



++41 61 775 20 59



[service@emc-partner.ch](mailto:service@emc-partner.ch)



[www.emc-partner.com](http://www.emc-partner.com)